

RE 91 501/05.98

Replaces: 11.96



Fixed Displacement Pump KFA

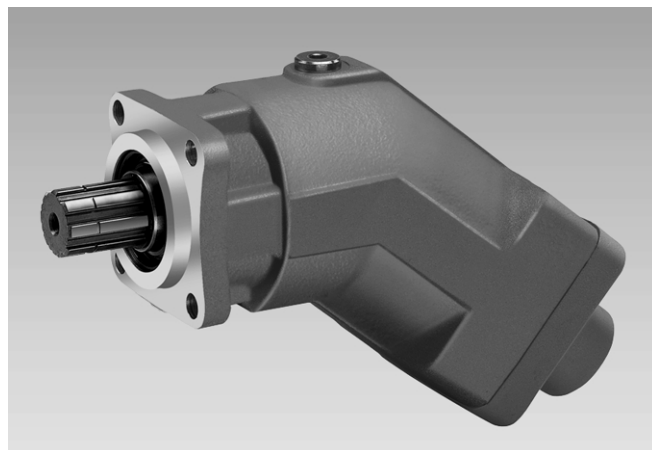
for commercial vehicles in open circuits

Sizes 23...107

Series 6

Nominal pressure 300 bar

Peak pressure 350 bar



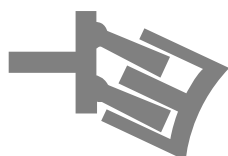
KFA

List of contents

Features	1
Ordering code	2
Technical data	3..5
Unit dimensions	6..8

Features

- A fixed displacement pump of axial piston design with a tapered piston bent axis rotary group. Designed especially to meet the requirements of truck applications.
- Output flow is proportional to input speed and displacement.
- 40° bent axis design giving high power/weight ratio, small overall dimensions, optimum efficiency and economic design
- Simple change of direction of rotation
- Self aspirating, for open circuit operation
- No drain line required
- Flange and shaft designed for direct mounting on truck gearbox PTO's
- Further information:
Variable Displacement Pump KVA RE 92 250
Designed especially to meet the requirements of truck applications.



Ordering Code



KFA2F O 080 / 6 3 - M E K 64

Fluid

Mineral oil (no code)

KFA2F	O		/	6	2	-	M	E	K	64
-------	---	--	---	---	---	---	---	---	---	----

Axial piston unit

Fixed displacement, bent axis design
for commercial vehicles
Nominal pressure 300 bar, peak pressure 350 bar

KFA2F

Mode of operation

Pump in open circuits

0

Size

≅ Displacement V_g (cm³)

23	32	45	63	80	107
----	----	----	----	----	-----

Series

6

Index

2

Seals

FPM (2 shaft seals)

M

Shaft end

Splined shaft similar DIN ISO 14 (for truck use)

E

Mounting flange

Special flange ISO 7653-1985 (for truck use)

K

Service line connections

Port A(B): threads at rear

64